

YSL - 1, 2 Type SAFETY VALVES (LOW LIFT TYPE)

Boiler

Heat Exchanger

Secondary side of P.R.V



YSL - 1 Type



YSL - 2 Type

This safety valve product is made of firm materials that has high anti-corrosion property and simple construction. It is commonly used for various kinds of fluids (steam, gas, liquid) flowing in pressure vessels, various facilities, safety products, hot water boilers and water & heat supply system in addition to air-conditioning system and safety devices for a pressure reducing valve.

FEATURES

- Simple construction and high capacity
- Disc & seat are processed with precision thus having no water leakage.
- Attached a test lever facilitates regular inspection.
- Certified by Korea Occupational Safety & Health Agency.

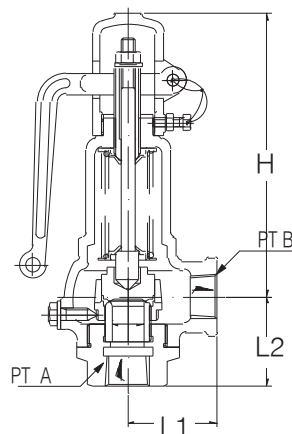
SPECIFICATION

Items	YSL - 1	YSL - 2
Test lever	With lever	Without test lever
Applicable fluid	Steam, gas, air	water
Applicable pressure	0.35 ~ 10kgf/cm ² g	
Applicable fluid temperature	Max. 220°C	
End connection	KS PT SCREW	
Materials	Body : Cast iron, Disc / seat : Stainless steel	
Valve body pressure test	Hydraulic 15kgf/cm ² g	

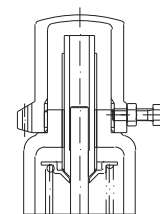
DIMENSIONS

Size	Seat opening dia.	Lift	Effective area (mm ²)		Face-to-face		Height(h)		Size of link part		Weight(kg)	
	D		ℓ	πDℓ	πD ² /4	L1	L2	YSL-1	YSL-2	A	B	YSL-1
15(1/2")	15	0.4	18.8	176.6	40	41	127	112	1/2"	1/2"	1.1	1
20(1/4")	20	0.5	31.4	314	50	50	137	122	3/4"	3/4"	1.8	1.7
25(1")	25	0.7	54.9	490.8	55	60	162	148	1"	1"	3	2.9
40(1 1/2")	40	1.0	125.6	1566.6	70	75	230	216	1 1/2"	1 1/2"	6.4	6.1
50(2")	50	1.3	204.1	1963.5	80	80	257	245	2"	2"	9.3	9

CONSTRUCTIONS



YSL - 1 Type



YSL - 2 Type